

## HUMMING BIRD INTERNATIONAL SPELL BEE

*Spell Bee is International Level Spelling Competition. The Competition is based on Multiple Choice Question Pattern which helps the Children to be more precise & careful while attempting the Questions.*

**Pattern: Multiple Choice Questions (MCQ's)**

**Subject:** Spelling based questions on Grammar, Basic & Adv. Language

**Centre of Examination:** The School itself will be the Centre of Examination



### CLASS 6 PREPARATORY BOOKLET

**INR 100/-**

**US \$ 6**

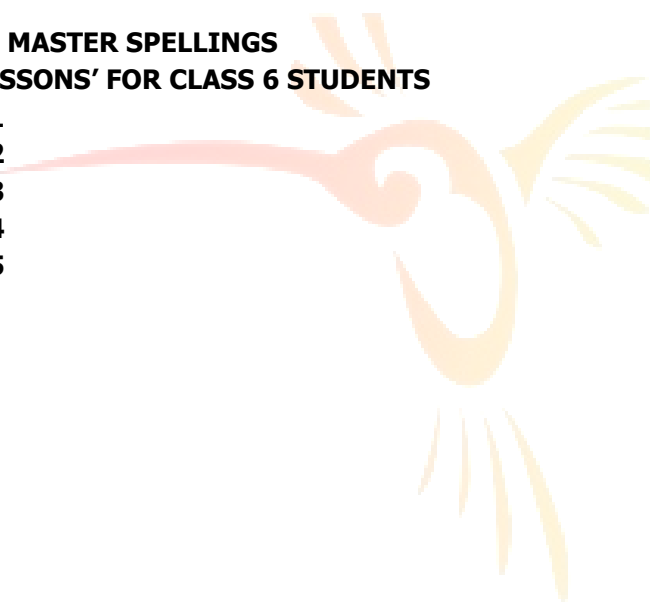
**Revised Edition: 2021-22**

**© Copyright reserved**

All the Rights Reserved. No part of this publication may be reproduced, stored in a retrieval system or transmitted, in any form or by any means, electronic, mechanical, photocopying, recording or otherwise, without the prior permission of the Publisher.

*Note: Although the material for the book has been prepared by the Educationists however the Company does not take any liability related to matter or the errors present inside. The Feedback can be sent to [info@olympiads.co.in](mailto:info@olympiads.co.in) for any improvement/ corrections.*

**BOOK CONTENTS**

- 1. 8 GOLDEN RULES TO MASTER SPELLINGS**
  - 2. 30 SHORT 'WORD LESSONS' FOR CLASS 6 STUDENTS**
  - 3. PRACTICE PAPER – 1**
  - 4. PRACTICE PAPER – 2**
  - 5. PRACTICE PAPER – 3**
  - 6. PRACTICE PAPER – 4**
  - 7. PRACTICE PAPER – 5**
- 

## **8 GOLDEN RULES TO MASTER SPELLINGS**

### **How To Master Spelling #1**

#### **Images Before Rules**

There is a long list of spelling rules. The most famous of these, of course, was the infamous 'I before E, except after C' rule, but there were squillions of others. Let me tell you two major drawbacks to this approach to spelling...

Firstly, the English language has exceptions - not just a handful, but a bucketful of them - to just about every spelling rule you'll ever be confronted with. Because our language is such a collage of other languages, it is impossible to describe it using a bunch of simple rules. In fact, it is for this reason that Spelling Bees have come to play such a big part of English-speaking culture. Did you know that in more predictable languages, like German, they don't even have spelling bees. Why? It would be too easy.

Secondly, and this is the most important of all, our brains don't master spelling through rules. Suppose I showed you a misspelled word (which I won't - as per the next tip!), and then you correctly tell me that it is misspelled. What would you say if I asked you to explain how you knew it was misspelled? In virtually all cases, the answer is simply this 'It just doesn't look right!'

The secret to correct spelling - well, there are several, but this is a biggie - lies in exposing your brain to the image of a word over and over again. Moreover, the image needs to be quite large (larger than the words of a typical printed book or Web page) and free from other distractions.

### **How To Master Spelling #2**

#### **Avoid Looking at Misspellings**

This one follows logically from the previous tip, but I thought I'd highlight it because it's a mistake you'll see made in classrooms frequently.

People sometimes think they are helping you learn to master a tricky spelling by showing ways in which it is often misspelled. Bad mistake! Just as repeated exposure to word-images is responsible for most of our ability to spell words correctly, it can also be responsible for our tendency to spell words incorrectly - if, that is, we keep staring at commonly misspelled versions of words. The solution is simple.

Don't do it - make sure that all of your spelling lists are full of correctly spelled words only.

### **How To Master Spelling #3**

#### **See It, Hear it, Say It**

Involving several senses in the learning process can really speed up word-acquisition. Each time you see the new word, don't just look at it (although that is very important too!), find out how it is pronounced and say it aloud. If possible, get somebody else to help out by saying the word too.

Not only do the different sensations (seeing, hearing, saying) work together to help ingrain a new word, but if you're rehearsing for a spelling bee your study pattern needs to simulate the competition itself. If you were to study by just staring at word lists, you would be completely thrown when faced with a word verbally - even if you know it cold!

### **How To Master Spelling #4**

#### **Target Your Specific Weaknesses**

Word study has to be personalized if it is to be efficient. When you receive a spelling list from a teacher, or download one from a website, it will typically contain a large number of words you already know. In fact, research conducted in American schools has shown that typical spelling lists handed out to students contain as few as 25% unfamiliar words!

Although you need to revisit familiar words occasionally (more on that later), you will improve spelling far more rapidly if you filter out all the familiar words. Not just by crossing the familiar words out - which still leaves distractions all over the page - but by constantly recreating new lists filled only with the words you are not confident with.

### **How To Master Spelling #5**

#### **FIRST Test, THEN Study**

But how do you tailor a spelling program to what you don't know, if you don't know what you don't know? A good question indeed, and I'm very glad you asked ;-)

Traditional teaching requires us to study a set amount of material for weeks on end, and then tests us at the end to see how well we mastered it. There are several weaknesses in this approach. For one thing, and this recaps on a point I made earlier, you may then

be devoting far too much precious time on things you already know. For another, you can take a very long time to find out that your study has been ineffective. The solution?

Test yourself first, and then develop a study program around the weaknesses you found in your test. This also means that you don't have to make guesses at what you think you already know.

### **How To Master Spelling #6**

#### **Form Relevant Associations**

Disorganized lists of words and facts are very difficult to remember. There is a well-known strategy for achieving almost miraculous feats of memory when it comes to recalling long random-looking lists, and that is to make extensive use of images and stories.

The idea then is to group words together into meaningful lists, where each list has a clear theme. You can then use pictures, stories, and other clever memory devices to glue the words in each list together.

The suffix -OUS, for example, usually sounds just like the suffix -OSE, making it difficult to remember which words end in which suffix. Rather than disperse these words indiscriminately through your spelling lists, it is far more effective to group all the -OUS words together in one list and all the -OSE together in another list.

When you are testing yourself, these words will be thrown at you randomly, of course (just as they are in real life!). But when you go to retrieve a word from your brain, it will be connected to its neighbors through a mnemonic, a story, or one of your own ingenious inventions ;-)

### **How To Master Spelling #7**

#### **Time Repetitions Carefully**

There are far too many words in any dictionary to rehearse every word every day. It would take most of us a whole year to get through it once. Not to mention the fact that most of us would die of boredom well before we got to the end!

But words have to be repeated many times (experts say 6 or 7 is typical) before they become a part of our working vocabulary. So how can we possibly master a long list of

words in a reasonably short period of time? The answer lies in carefully timing your repetitions.

Once you have successfully spelled a word on three or four occasions, remove it from the frequently-tested list. You know it. Move on. Other words need to be rehearsed more frequently (daily or weekly, depending on your success rate).

Don't test yourself on a given word too frequently though. It is possible to recall words from your short term memory (e.g. if you just tested yourself a half an hour ago) but then fail to recall the word a week later. Leave at least a day between repetitions of any given word.

### How To Master Spelling #8

#### Stay Motivated

Well duh! Of course being motivated is important, but why bother adding it as a tip? Because many people might think that being motivated requires you to enroll in a 'positive-thinking' program. Not at all. I'm not really talking about that kind of motivation. I mean keeping the brain alert throughout your study sessions, and ensuring that you're always enticed to keep going.

Here are a few tips :

**Work with others** — Many people find group work more stimulating than solo study sessions. In addition to the obvious reasons that groups can break the monotony, there are a couple of not so obvious ones here. Firstly, by divvying up spelling tasks (finding all words having a certain tricky-to-spell quality, for example), you can pool your resources. Secondly, the only way to test yourself on spelling a word from its pronunciation is if you get another person to pronounce it! When you work in groups you can take turns of testing each other, and the sessions are not only more useful, but far more entertaining.

**Regular feedback** — Test yourself frequently and in small batches. Getting feedback after six months of hard slog is no fun at all. Getting a score out of 20 on a daily basis, every single time you sit down to study is far more rewarding and motivating. This 'immediate gratification' plays a big part in the appeal of computer programming to many students. When you write a computer program and execute it, the computer tells you immediately whether you've made a mistake or not. Instant feedback works wonders for most people.

**30 SHORT 'WORD LESSONS'**

*\*Learn One Lesson a Day for the best results*

**Spelling Lesson 1**

sue lieu suit beauty cubic fluid  
juice beautiful cuticle mutiny purity

**Spelling Lesson 2**

lungs plush trump slumber russet duchess  
scuffle clump stunt skulk young butterfly

**Spelling Lesson 3**

TRUE crude rule rumor rural prune  
truce spruce cruise custody luxury summary

**Spelling Lesson 4**

bull pull put push pulpit pulley  
cushion fully bushy butcher bulletin

**Spelling Lesson 5**

urge burn spur curb journey spurn  
nurse burst urgency curliness journalist

**Spelling Lesson 6**

apply deny rely reply tyrant hydra  
typhus type dynasty asylum hyena

**Spelling Lesson 7**

cyst system syntax lyric lymph nymph  
symmetry syndicate synopsis

**Spelling Lesson 8**

voice troy poise recoil rejoice destroy  
employ spoil moist broil choice enjoyment  
disjointed employment appointment

**Spelling Lesson 9**

howl gown cowl down allow endow  
vowel crowd prowl scowl brown flowery powerful

**Spelling Lesson 10**

sour pout soup groundless roulette grouping  
mount wound announcement unfounded



**Spelling Lesson 11**

clot acts acid solace tactic traffic  
tracebrace curd cave December incessant  
enactment elector

**Spelling Lesson 12**

monk sunk monkey congress language drink  
trunk singular drunkenness

**Spelling Lesson 13**

zeal sick pest has ease vestment  
amuse infuse smelt gross grows ruse  
possessive assessor resemble resonant

**Spelling Lesson 14**

chorus such chef chasm speechless machine  
chemist child chaise chocolate chivalry character

**Spelling Lesson 15**

gem gearing gender sluggishgesture slug  
crag giddiness guillotine general

**Spelling Lesson 16**

thin thaw this than thesis gather  
bother breath theft breathe mythical theory  
hitherto otherwise

**Spelling Lesson 17**

exit excel exalt exempt expansive example  
extraneous exterior executive

**Spelling Lesson 18**

quack queen plaque clique quorum piquant  
quote torque quotation

**Spelling Lesson 19**

cascade exchange inflame partake address reflex  
arrest contest depress amaze abrade crusade

**Spelling Lesson 20**

debase regret except expect expend express  
include refuse manure inject invent

**Spelling Lesson 21**

oppress      redress alarm    afar      remark debark  
embark      acquit    adrift    remiss    benefit    persist

**Spelling Lesson 22**

abrupt      construct      instruct attire    entice    entire  
incline      incite    discuss deduct    rebut

**Spelling Lesson 23**

result      invite    oblige    perspiresublime survive  
across      adopt    aloft    belong

**Spelling Lesson 24**

report      console agree    asleep    esteem decree  
degree      disclose dispose restore    explode

**Spelling Lesson 25**

contact      forest    hobby    lofty    logic    ambush  
aspect      nostril    product problem      roster

**Spelling Lesson 26**

torrent bankrupt havoc haggard hatchet curry  
fulcrum huddle public publish kindred

**Spelling Lesson 27**

picket ticket invoice pungent rustic rubbish  
sulkysultry scribble triplet trickle lizard

**Spelling Lesson 28**

native pavement putrid purist equal freedom  
meeting bounty county coward

**Spelling Lesson 29**

drowsy fountain cypress Friday iceberg libel  
migrate powder prowess soundings

**Spelling Lesson 30**

towel tower tribal crisis hydrant science  
silent boyhood joyous loiter loyal

**PRACTICE PAPER – 1**

**Questions: 50**

**SPELL BEE**

**Time: 60 Minutes**

**1. Name the process through which salt water can be separated?**

- (a) Crystillization                      (b) Crystallization  
(c) Distillation                         (d) Distilation

**2. Which method is used by the crane to separate the metal scrap?**

- (a) Magnetic Separation              (b) Centrifugation  
(c) Sentrifugation                      (d) Magnatic Separation

**3. Which change is useful to man?**

- (a) Irreversible                         (b) Desirable  
(c) Ireversible                         (d) Desireble

**4. What is joined with the limbs?**

- (a) Tighs                      (b) Girdle                      (c) Girdale                      (d) Thighs

**5. \_\_\_\_\_ is magnetic substances.**

- (a) Branze                      (b) Bronze                      (c) Nickel                      (d) Nickal

**6. What can we use to find the boiling point of milk?**

- (a) Thermagraph                         (b) Thermameter  
(c) Thermograph                         (d) Thermometer

**7. \_\_\_\_\_ is a unit of measure in ancient times.**

- (a) Cubit                      (b) Scale                      (c) Sccale                      (d) Cubitt

**8. Aarav arrow shot straight at the fish on the ceiling. What kind of motion did he perform?**

- (a) Curvelinear (b) Linear (c) Curvilinear (d) Liniar

**9. Which process is use to turn dry ice into gas without changing into liquid?**

- (a) Evaporation (b) Evoparation (c) Sablimation (d) Sublimation

**10. What can be used to measure the circumference of a gold coin?**

- (a) Ruler (b) Plastic string (c) Rular (d) Plastik Sriring

**11. During the Non-Cooperation Movement, which award did Gandhiji return?**

- (a) Knighthood (b) Nighthood  
(c) Kaiser-e-Hind (d) Kesar-e-Hind

**12. Which among the following nontoxic gases helps in formation of enzymes which ripen fruit?**

- (a) Acetylene (b) Ethane (c) Ethaine (d) Acetyeline

**13. Which of the following is known as the voice box?**

- (a) Larnyx (b) Pharynx (c) Pharnyx (d) Larynx

**14. Which is the longest poisonous Snake?**

- (a) Black Mamba (b) Black Momba  
(c) King Cobra (d) King Cabra

**15. The First Indian Woman to scale Mount Everest was:**

- (a) Arati Saha  
(b) Arate Saha  
(c) Bachendri Pal  
(d) Bachenderi Pal

**16. Name the Pakistani Submarine that was drowned by Indian forces in 1971?**

- (a) Agosta      (b) Agasta      (c) Ghazi      (d) Ghogi

**17. Coral reefs in India can be found in**

- (a) Valtair      (b) Waltair      (c) Rameshwaram      (d) Rameshawaram

**18. Film and TV institute of India is located at**

- (a) Pune      (b) Pimperri      (c) Pimpri      (d) a and c

**19. Which building was attacked in the 9/11 attack?**

- (a) Twin Towers      (b) Times Square  
(c) Tuen Towers      (d) None of these

**20. Epsom is the place associated with**

- (a) Horse Racing      (b) Shouting  
(c) Shooting      (d) None of these

**Directions (Q.no. 21-25): Choose the correct antonym of the given words along with correct spelling:**

**21. BELITTLE**

- (a) Exaggerate      (b) Exaagerate      (c) Flatter      (d) Flater

**22. RELAXED**

- (a) Agitated      (b) Endless      (c) Endles      (d) Aggitated

**23. BUSY**

- (a) Engrossed      (b) Quiet      (c) Queit      (d) Engrosed

**24. FRESH**

- (a) Stale      (b) Slugish      (c) Sluggish      (d) Stalle

**25. CULPABLE**

- (a) Careless      (b) Careles      (c) Blameles      (d) Blameless

**Directions (Q.no. 26-30): Choose the correct synonym of the given words along with correct spelling:**

**26. INVADE**

- (a) Maraud      (b) Intuition      (c) Maraut      (d) Intution

**27. RASH**

- (a) Reckles      (b) Reckless      (c) Courageous      (d) Couragious

**28. Result**

- (a) Conclusion      (b) Consekuece  
(c) Consequence      (d) Concluson

**29. IMPROVEMENT**

- (a) Preference      (b) Praference  
(c) Beterment      (d) Betterment

**30. SOLDIER**

- (a) Warior      (b) Espy      (c) Spy      (d) Warrior

**Directions (Q.no. 31-35): Choose the word with correct spelling which can be substituted for the given word/sentence:**

**31. A person who knows many foreign languages**

- (a) Linguist      (b) Linguest  
(c) Polyglot      (d) Polyglott

**32. One who has little faith in human sincerity and goodness**

- (a) Sync      (b) Cynic      (c) Egoist      (d) Egoest



**33 One who possesses many talents**

- (a) Gifted (b) Giftted  
(c) Versatile (d) Vercatile

**34. Words inscribed on tomb**

- (a) Epilogue (b) Epiloge  
(c) Epitaph (d) Epitap

**35. One who eats everything**

- (a) Omnivorous (b) Omnivorus  
(c) Omniscient (d) Omnisceint

**Directions (Q.no. 36-40): Pick out the most effective word(s) with correct spelling from the given words to fill in the blank to make the sentence meaningfully complete.**

**36. Some regions of our country still remain ..... to the average man.**

- (a) inaccesible (b) inaccessible  
(c) impossible (d) imposible

**37. The car in which the minister was traveling ..... with an accident.**

- (a) met (b) mat (c) crashed (d) crased

**38. The non-cooperative attitude of the members can only ..... the image of the society.**

- (a) degrede (b) degrade (c) spoil (d) spoile

**39. Sonika is quite intelligent but rather .....**

- (a) lasy (b) generus  
(c) generous (d) lazy

**40. In a little-publicized deal, Pepsi, Cola has ..... the entire soft drink market in Afghanistan.**

- (a) captured (b) capturad  
(c) occupied (d) occupied

**Directions (Q.no. 41-45): Find the correctly spelt words.**

**41.**

- (a) Itinarery (b) Itinerary  
(c) Itenary (d) Itinary

**42.**

- (a) Survaiillance (b) Surveillence  
(c) Survellance (d) Surveilance

**43.**

- (a) Sepulchral (b) Sepilchrle  
(c) Sepalchrul (d) Sepalchrl

**44.**

- (a) Acommodation (b) Accomodaton  
(c) Accommodation (d) Acomodation

**45.**

- (a) Faithfully (b) Sincerely  
(c) Truely (d) Affectionatly

**Directions (Q.no. 46-50): Each question consist of two words which have a certain relationship to each other followed by four pairs of related words, Select the pair which has the same relationship.**

**46. TEN:DECIMAL**

- (a) two:binary    (b) two:binery    (c) four:quartet    (d) four:quartat

**47. MUNDANE:SPIRITUAL**

- (a) common:gostly                      (b) common:ghostly  
(c) worldly: unworldly                (d) wordily:unwordely

**48. ARMY:LOGISTICS**

- (a) war:logic                              (b) war:lozic  
(c) business:stratagy                  (d) business:strategy

**49. GRAVITY:PULL**

- (a) iron:medal                            (b) magnetism:attraction  
(c) iron:metal                             (d) magnatism:attraction

**50. FILTER:WATER**

- (a) edit:text                                (b) edit:test  
(c) censor:play                            (d) cencor:play



ANSWERS									
1.	c	11.	c	21.	a	31.	a	41.	b
2.	a	12.	a	22.	a	32.	b	42.	b
3.	b	13.	d	23.	b	33.	c	43.	a
4.	b	14.	c	24.	a	34.	c	44.	c
5.	c	15.	c	25.	d	35.	a	45.	b
6.	d	16.	c	26.	a	36.	b	46.	a
7.	a	17.	c	27.	b	37.	a	47.	c
8.	b	18.	a	28.	c	38.	c	48.	d
9.	d	19.	a	29.	d	39.	d	49.	b
10.	b	20.	a	30.	d	40.	a	50.	C

**PRACTICE PAPER – 2**

**Questions: 50**

**SPELL BEE**

**Time: 60 Minutes**

**1. Air is a \_\_\_\_\_ of gases.**

- (a) Compound (b) Campound  
(c) Mixture (d) None of these

**2. \_\_\_\_\_ invented electric cell.**

- (a) Alessandro Volta (b) Thomas Alva Edison  
(c) Alesandra Volta (d) Thomus Elva Edison

**3. Pick the correct spelling:**

- (a) Anamia (b) Anemia (c) Anemai (d) Animia

**4. Name the process by which the embryo of the seed becomes active and grows into a young plant?**

- (a) Fertilization (b) Fertilisation  
(c) Germination (d) Garmination

**5. Select the correct spelling.**

- (a) Raticulate (b) Reticalate (c) Reticalute (d) Reticulate

**6. Ridhi's Grandmother was repairing her dress. The needle fell from her hand and now, she cannot find it. What will unfliningly help her find the needle?**

- (a) A compass (b) A magnat (c) A campass (d) A magnet

**7. \_\_\_\_\_ is a scale for a thermometer.**

- (a) Fahrenheit (b) Fahranheat (c) Fahrenheat (d) Fahrenhait

**8. How rock candy can be made?**

- (a) Filtration      (b) Crystallization      (c) Filtration      (d) Crystalization

**9. X are building blocks of the body. They are the main components of various structures in the body, like muscles, nails, hairs etc. What is X?**

- (a) Carbahydretes      (b) Carbohydrates  
(c) Protiens      (d) Proteins

**10. The wool yarn also shrinks away from the flame and burns like that of silk but it does not melt. It has a strong odour of:**

- (a) Burning nilon      (b) Burning nylon  
(c) Burning hair      (d) None of these

**11. Which is the official residence of the President of India?**

- (a) Buckingham Palace      (b) Buckingham Palace  
(c) Rashtrapati Bhavan      (d) Rashterapati Bhawan

**12. Which breed of Dog has black tongue?**

- (a) Chow-Chow      (b) Dhingo      (c) Dingo      (d) Chaw-Chaw

**13. The smallest country in the World is:**

- (a) Vatican City      (b) Nairu      (c) Nauru      (d) Vatecon City

**14. .... is the largest sea creature.**

- (a) Great Blue Whale      (b) Salman  
(c) Salmon      (d) None of these

**15. The oldest mountains in India according to geographical history is:**

- (a) Vindiya      (b) Araveli      (c) Vindhya      (d) Aravalli

**16. .... is called second gas giant.**

- (a) Jupiter      (b) Saturn      (c) Jupitar      (d) Satarn

**17. The shape of our nearest Galaxy is**

- (a) Eliptical      (b) Elliptical      (c) Spiral      (d) Sppiral

**18. Which is the largest Gland in our body?**

- (a) Liver      (b) Livar      (c) Pituitary Gland      (d) Pitutary Gland

**19. Which foreigner to receive BHARAT RATNA?**

- (a) Jerie Mock      (b) Nelson Mandela  
(c) Jerrie Mock      (d) Nelson Mendala

**20. .... is the largest sea in the World.**

- (a) South China      (b) Caribbean      (c) Carribean      (d) Caribeian

**Directions (Q.no. 21-25): Choose the correct antonym of the given words along with correct spelling:**

**21. HONEST**

- (a) Evasive      (b) Avasive      (c) Liberal      (d) Libaral

**22. GREGARIOUS**

- (a) Glorious      (b) Glorius      (c) Anti-Social      (d) Enti-Social

**23. AWARE**

- (a) Uncertain      (b) Ignorant      (c) Uncertan      (d) Egnorant

**24. HIRSUTE**

- (a) Quiet      (b) Queit      (c) Baled      (d) Bald

**25. SHRINK**

- (a) Contract      (b) Controct      (c) Expand      (d) Expend

**Directions (Q.no. 26-30): Choose the correct synonym of the given words along with correct spelling:**

**26. FAR**

- (a) Separate (b) Distent (c) Distant (d) Seperate

**27. MISFORTUNE**

- (a) Adversity (b) Krisis (c) Crisis (d) Adwersity

**28. FAKE**

- (a) Immitation (b) Imitation (c) Loyal (d) Loyale

**29. INDICT**

- (a) Acuse (b) Allege (c) Alege (d) Accuse

**30. STRINGENT**

- (a) Rigorous (b) Rigurous (c) Strained (d) Straned

**Directions (Q.no. 31-35): Choose the word with correct spelling which can be substituted for the given word/sentence:**

**31. The custom or practice of having more than one husband at same time**

- (a) Polyendry (b) Polygany (c) Polyandry (d) Polygamy

**32. Tending to move away from the centre or axis**

- (a) Centripetal (b) Centrifugol  
(c) Centrifugal (d) Centripatal

**33. A person interested in collecting, studying and selling of old things**

- (a) Crank (b) Antiquarian (c) Antikuarian (d) Krank

**34. A drawing on transparent paper**

- (a) Transparency (b) Transparancy (c) Blue print (d) Blui print



**35. One who is not easily pleased by anything**

- (a) Maiden      (b) Maidon      (c) Fastidious      (d) Fastedious

**Directions (Q.no. 36-40): Pick out the most effective word(s) with correct spelling from the given words to fill in the blank to make the sentence meaningfully complete.**

**36. He ..... in wearing the old fashioned coat in spite of his wife's disapproval.**

- (a) resists      (b) perrists      (c) rasists      (d) persists

**37. Life is to death as pleasure is to .....**

- (a) pain      (b) anguish      (c) enguish      (d) none of these

**38. If you work beyond your capacity, you will naturally feel .....**

- (a) giddy      (b) tired      (c) gidy      (d) none of these

**39. A crescendo of metallic thuds arose from the market, where the iron-smiths were ..... the pieces of metals.**

- (a) hamering      (b) thrashing      (c) hammering      (d) thrassing

**40. Many ..... decisions were taken at the meeting.**

- (a) hectic      (b) hectic      (c) historric      (d) historic

**Directions (Q.no. 41-45): Find the correctly spelt words.**

**41.**

- (a) Vetarinary      (b) Veteninary  
(c) Vetinary      (d) Veterinary

**42.**

- (a) Chancelary      (b) Chancellery  
(c) Chancelery      (d) Chancellary

**43.**

- |               |               |
|---------------|---------------|
| (a) Excessive | (b) Excessive |
| (c) Exxcesive | (d) Excesive  |

**44.**

- |                   |                   |
|-------------------|-------------------|
| (a) Indipensable  | (b) Indipenseble  |
| (c) Indispansible | (d) Indispensable |

**45.**

- |              |                 |
|--------------|-----------------|
| (a) Humorous | (b) Ganerous    |
| (c) Pupulous | (d) Maretorious |

**Directions (Q.no. 46-50): Each question consist of two words which have a certain relationship to each other followed by four pairs of related words, Select the pair which has the same relationship.**

**46. HOPE:ASPIRES**

- |               |               |             |             |
|---------------|---------------|-------------|-------------|
| (a) film:flam | (b) film:flum | (c) fib:lei | (d) fib:lie |
|---------------|---------------|-------------|-------------|

**47. CORPOREAL:SPIRITUAL**

- |                  |                  |
|------------------|------------------|
| (a) mesa:plateau | (b) mesa:plataeu |
| (c) moron:savant | (d) moron:sawant |

**48. SYMPHONY:COMPOSER**

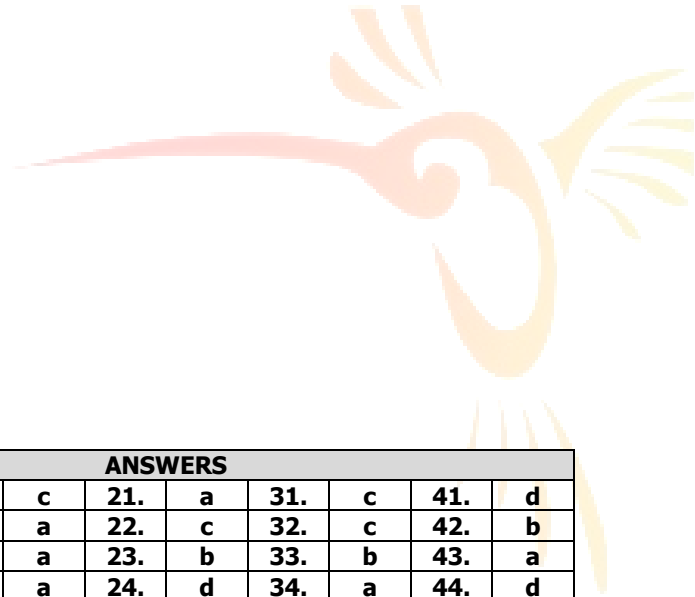
- |                    |                    |
|--------------------|--------------------|
| (a) fresca:painter | (b) fresco:painter |
| (c) colours:pallet | (d) colors:palet   |

**49. GRAVITY:PULL**

- |                |                          |
|----------------|--------------------------|
| (a) iron:medal | (b) magnetism:attraction |
| (c) iron:metal | (d) magnatism:attraction |

**50. FILTER:WATER**

- (a) edit:text      (b) edit:test      (c) censor:play      (d) cencor:play



<b>ANSWERS</b>									
<b>1.</b>	<b>c</b>	<b>11.</b>	<b>c</b>	<b>21.</b>	<b>a</b>	<b>31.</b>	<b>c</b>	<b>41.</b>	<b>d</b>
<b>2.</b>	<b>a</b>	<b>12.</b>	<b>a</b>	<b>22.</b>	<b>c</b>	<b>32.</b>	<b>c</b>	<b>42.</b>	<b>b</b>
<b>3.</b>	<b>b</b>	<b>13.</b>	<b>a</b>	<b>23.</b>	<b>b</b>	<b>33.</b>	<b>b</b>	<b>43.</b>	<b>a</b>
<b>4.</b>	<b>c</b>	<b>14.</b>	<b>a</b>	<b>24.</b>	<b>d</b>	<b>34.</b>	<b>a</b>	<b>44.</b>	<b>d</b>
<b>5.</b>	<b>d</b>	<b>15.</b>	<b>d</b>	<b>25.</b>	<b>c</b>	<b>35.</b>	<b>c</b>	<b>45.</b>	<b>a</b>
<b>6.</b>	<b>d</b>	<b>16.</b>	<b>b</b>	<b>26.</b>	<b>c</b>	<b>36.</b>	<b>d</b>	<b>46.</b>	<b>d</b>
<b>7.</b>	<b>a</b>	<b>17.</b>	<b>c</b>	<b>27.</b>	<b>a</b>	<b>37.</b>	<b>a</b>	<b>47.</b>	<b>c</b>
<b>8.</b>	<b>b</b>	<b>18.</b>	<b>a</b>	<b>28.</b>	<b>b</b>	<b>38.</b>	<b>b</b>	<b>48.</b>	<b>b</b>
<b>9.</b>	<b>d</b>	<b>19.</b>	<b>b</b>	<b>29.</b>	<b>d</b>	<b>39.</b>	<b>c</b>	<b>49.</b>	<b>b</b>
<b>10.</b>	<b>c</b>	<b>20.</b>	<b>a</b>	<b>30.</b>	<b>a</b>	<b>40.</b>	<b>d</b>	<b>50.</b>	<b>c</b>

**PRACTICE PAPER – 3**

**Questions: 50**

**SPELL BEE**

**Time: 60 Minutes**

**1. Which gas is used in bulb?**

- (a) Argon (b) Argan  
(c) Noen (d) Neon

**2. Who proved that water is a compound?**

- (a) Thomas Elva Adison (b) Thomas Alva Edison  
(c) Henry Cavendish (d) Hanry Cavandish

**3. Which type of change takes place in bursting of crackers?**

- (a) Physical and endothermic (b) Chemical and exothermic  
(c) Chemical and endothermic (d) Physical and exothermic

**4. What is physical change?**

- (a) Temporary (b) Irreversible  
(c) Temporary (d) Invarsible

**5. What is the commercial unit of energy?**

- (a) Joule (b) Joole (c) Vatt (d) Watt

**6. Name the disease caused by the deficiency of vitamin D?**

- (a) Scurvy (b) Rickets (c) Scarvy (d) Rickats

**7. What is 3Rs?**

- (a) Reuse, Recycle, Reinvent (b) Recycle, Reuse, Reduce  
(c) Reuse, Redeem, Rediscover (d) Recycle, Relight, Report

**8. \_\_\_\_\_ is not an artificial fibre.**

- (a) Acrylic
- (b) Flex
- (c) Aryclic
- (d) Flax

**9. Apple plants belong to**

- (a) Dicots
- (b) Conifers
- (c) Decots
- (d) Conefers

**10. Name the process by which the embryo of the seed becomes active and grows into a young plant?**

- (a) Fertilization
- (b) Fertilisation
- (c) Germination
- (d) Germenation

**11. Garampani Sanctuary is located at**

- (a) Junagarh, Gujarat
- (b) Karbi, Assam
- (c) Junagorh, Maharastra
- (d) Karhi, Assam

**12. Hitler party which came into power in 1933 is known as**

- (a) KO-Klax Clan
- (b) Nazi Party
- (c) Ku-Klux Clan
- (d) Nasi party

**13. Guarantee to an exporter that the importer of his goods will pay immediately for the goods ordered by him, is known as**

- (a) Letter of Credit (L/C)
- (b) Laissezfaire
- (c) Lassezfare
- (d) Leter of Credit

**14. Fire temple is the place of worship of which of the following religion?**

- (a) Taoism
- (b) Taiosm
- (c) Zoroastrianism
- (d) Zorastriansm

**15. Malaria is caused by**

- (a) Parasitic protozoans                      (b) Mosquito  
(c) Parasitic protozoans                      (d) Mosquito

**16. Who was the first person to sail around the world?**

- (a) Wright Brothers                              (b) Magellan  
(c) Right Brothers                                (d) Megallen

**17. FRS stands for**

- (a) Fellow Research System                      (b) Fellow Reserch System  
(c) Fellow of Royal Society                      (d) Fellow of Royale Society

**18. Where is the capital of East Timor?**

- (a) Darwin                                              (b) Dili  
(c) Darvin                                              (d) Dilli

**19. Which is the Capital of CHINA?**

- (a) Tokyo                                                (b) Beijing  
(c) Tokio                                                (d) Biejing

**20. The book 'Gulliver's Travels' was written by:**

- (a) Charles Dickon                                (b) Charles Dicken  
(c) Jonathan Cwift                                (d) Jonathan Swift

**Directions (Q.no.21-22): Choose the correct adjective along with correct spelling**

**21. It was an \_\_\_\_\_ show.**

- (a) fortunued      (b) unfortunatte      (c) fartuned      (d) unfortunute



**29. EMBEZZLE**

- (a) Remunerate (b) Remunirate  
(c) Misapropriate (d) Misappropriate

**30. AUGUST**

- (a) Dignifeid (b) Dignified  
(c) Petty (d) Pety

**Directions (Q.no. 31-35): Choose the word with correct spelling which can be substituted for the given word/sentence:**

**31. Extreme old age when a man behaves like a fool**

- (a) Imbecility (b) Dotage  
(c) Dottage (d) Imbecillity

**32. That which cannot be corrected**

- (a) Illigible (b) Iligible  
(c) Incorrigible (d) Incorigible

**33. The study of ancient societies**

- (a) Arceology (b) Histary  
(c) History (d) Archaeology

**34. A person of good understanding knowledge and reasoning power**

- (a) Intellectual (b) Literate (c) Litarate (d) Intelectual

**35. A person who insists on something**

- (a) Baoster (b) Boaster  
(c) Stickler (d) Sticler





**42.**

- |             |             |
|-------------|-------------|
| (a) Foreign | (b) Foreine |
| (c) Fariegn | (d) Forein  |

**43.**

- |               |              |
|---------------|--------------|
| (a) Ommineous | (b) Omineous |
| (c) Ominous   | (d) Omenous  |

**44.**

- |               |               |
|---------------|---------------|
| (a) Pessenger | (b) Passenger |
| (c) Pasanger  | (d) Pesanger  |

**45.**

- |                 |               |
|-----------------|---------------|
| (a) Benefittedd | (b) Benifited |
| (c) Benefited   | (d) Benefeted |

**Directions (Q.no. 46-50): Each question consist of two words which have a certain relationship to each other followed by four pairs of related words, Select the pair which has the same relationship.**

**46. DIVA:OPERA**

- |                     |                    |
|---------------------|--------------------|
| (a) dirrector:drama | (b) director:drama |
| (c) thespian:play   | (d) thespain:play  |

**47. GRAIN:SALT**

- (a) shard:pottery
- (b) sherd:pottery
- (c) chip:glas
- (d) chip:glass

**48. THRUST:SPEAR**

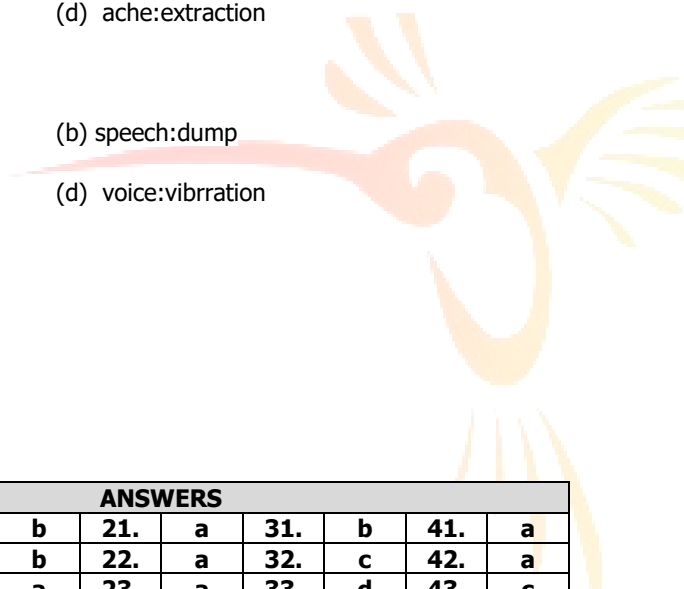
- (a) fence:epee (b) fense:epe  
 (c) bow:arrow (d) bowe:arrow

**49. PAIN:SEDATIVE**

- (a) greif:consolation (b) grief:consolation  
 (c) ache:extraction (d) ache:extraction

**50. LIGHT:BLIND**

- (a) speech:dumb (b) speech:dump  
 (c) voice:vibration (d) voice:vibrantion



ANSWERS									
1.	d	11.	b	21.	a	31.	b	41.	a
2.	c	12.	b	22.	a	32.	c	42.	a
3.	b	13.	a	23.	a	33.	d	43.	c
4.	a	14.	c	24.	d	34.	a	44.	b
5.	d	15.	b	25.	a	35.	c	45.	c
6.	b	16.	b	26.	c	36.	d	46.	c
7.	b	17.	c	27.	a	37.	c	47.	d
8.	d	18.	b	28.	a	38.	b	48.	a
9.	a	19.	b	29.	d	39.	a	49.	b
10.	c	20.	d	30.	b	40.	c	50.	a



**7. \_\_\_\_\_ found that magnets could be produced using an electric current.**

- (a) Michael Faraday                      (b) Michale Fareday  
(c) Hans Christian Oersted              (d) Hans Chrstian Ourested

**8. \_\_\_\_\_ belong to the species of Homo sapiens.**

- (a) Squarrel                                (b) Squirrel  
(c) Monkey                                 (d) None of these

**9. What is a mushroom?**

- (a) Saprophite                              (b) Xerophyte  
(c) Saprophyte                              (d) Xerophite

**10. How can we see an object from every direction?**

- (a) Regular Reflection                    (b) Irregular Reflection  
(c) Regular Reflaction                    (d) Irregular Reflaction

**11. Stilt roots are found in -**

- (a) Banyan                                    (b) Maize  
(c) Banyen                                    (d) Maise

**12. The capital of Kosala kingdom was -**

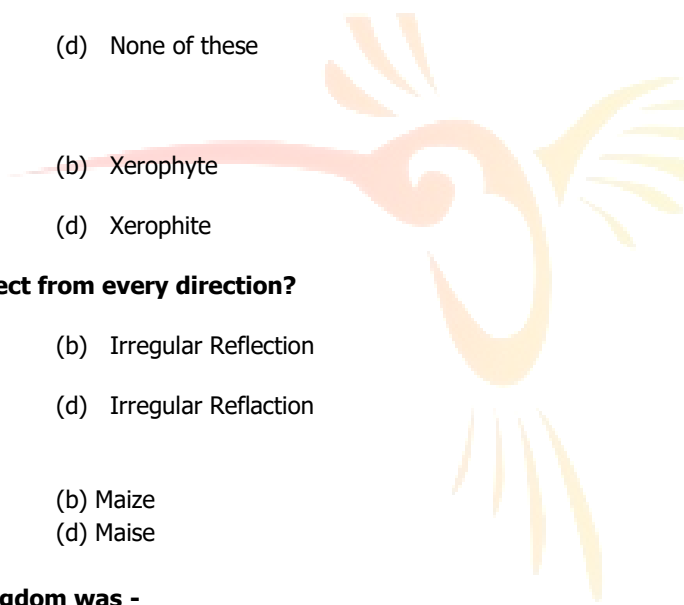
- (a) Aayodhaya                                (b) Kaosambi  
(c) Kausambi                                 (d) Ayodhya

**13. Who of the ancient Indian scholars calculated the exact value of pi?**

- (a) Varahamira                                (b) Varhamira  
(c) Brahmagupta                              (d) Brahamagupta

**14. Darwin finches refers to a group of**

- (a) Amphibeans                                (b) Birds  
(c) a and b                                      (d) Amphibians



**15. Which of the following terms is used in banking field?**

- (a) Interest rate swap (b) Input devices  
(c) a and b (d) Interest rate swape

**16. Who was the last British Viceroy of India?**

- (a) Lord Linlithgow (b) Lord Linlitgow  
(c) Lord Mountbatten (d) Lord Mountbaten

**17. Among the following who was the personal physician of Gautam Buddha?**

- (a) Sushruta (b) Jivika  
(c) Jivaka (d) Sushrata

**18. The anti-malarial drug Quinine is made from a plant. The plant is**

- (a) Cinamon (b) Cinchana  
(c) Cinnamon (d) Cinchona

**19. What kind of animal is Fuleco, the mascot for FIFA World Cup 2014?**

- (a) Giant Anteater (b) Armadilo  
(c) Armadillo (d) Giant Anteator

**20. Which of the following connects the Sternum to the ribs?**

- (a) Aerular tissue (b) Hyoline cartilage  
(c) Hyaline cartilage (d) Aerolar tissue

**Directions (Q.no. 21-25): Choose the correct antonym of the given words along with correct spelling:**

**21. POSSESS**

- (a) Abdicate (b) Abdecate  
(c) Relinquish (d) Rilenquish

**22. EXPAND**

- (a) Conclude (b) Canclude  
(c) Condanse (d) Condense

**23. MORTAL**

- (a) Divine      (b) Immortal      (c) Devine      (d) Imortal

**24. ACTIVE**

- (a) Quiescent      (b) Weak      (c) Quscent      (d) Quiscent

**25. FRAUDULENT**

- (a) Forthright      (b) Fourthrite  
(c) Genuene      (d) Genuine

**Directions (Q.no. 26-30): Choose the correct synonym of the given words along with correct spelling:**

**26. CLEVER**

- (a) Cany      (b) Canny      (c) Stout      (d) Staut

**27. ALERT**

- (a) Observant      (b) Observent  
(c) Watchful      (d) Watchfull

**28. PAUSED**

- (a) Hasitated      (b) Postponed  
(c) Postpaned      (d) Hesitated

**29. HELP**

- (a) Rescue      (b) Resque  
(c) Defence      (d) Defense

**30. TRY**

- (a) Explore      (b) Atempt      (c) Attempt      (d) Esplore

**Directions (Q.no. 31-35): Choose the word with correct spelling which can be substituted for the given word/sentence:**

**31. State in which the few govern the many**

- (a) Oligarchy (b) Oligarichy  
(c) Autacracy (d) Autocracy

**32. A style in which a writer makes a display of his knowledge**

- (a) Padentic (b) Pompous  
(c) Pampous (d) Pedantic

**33. List of the business or subjects to be considered at a meeting**

- (a) Aganda (b) Agenda (c) Schedule (d) Schedulle

**34. Leave or remove from a place considered dangerous**

- (a) Evacuate (b) Exterminate  
(c) Evacute (d) Extermenate

**35. A person pretending to be somebody he is not**

- (a) Rogue (b) Impostur (c) Imposter (d) Rogae

**Directions (Q.no. 36-40): Pick out the most effective word(s) with correct spelling from the given words to fill in the blank to make the sentence meaningfully complete.**

**36. Man does not live by ..... alone.**

- (a) meals (b) mials (c) bread (d) brrread

**37. Rohit and Rohan are twin brothers, but they do not look \_\_\_\_.**

- (a) allike (b) alike  
(c) unique (d) uniqe



**38. To err is \_\_\_ to forgive divine.**

- (a) inhuman (b) imhuman  
(c) human (d) none of these

**39. .... of old paintings is a job for experts.**

- (a) resumption (b) resamption  
(c) restoretion (d) restoration

**40. During Diwali the shops are ..... of people.**

- (a) bubbling (b) full  
(c) ful (d) bubling

**Directions (Q.no. 41-45): Find the correctly spelt words.**

**41.**

- (a) Treachrous (b) Trecherous  
(c) Trechearous (d) Treacherous

**42.**

- (a) Forcast (b) Forecaste (c) Forcaust (d) Forecast

**43.**

- (a) Rigerous (b) Rigourous (c) Regerous (d) Rigorous

**44.**

- (a) Palete (b) Palet (c) Palate (d) Pelate

**45.**

- (a) Bouquete (b) Bouquette  
(c) Bouquet (d) Boquet

**Directions (Q.no. 46-50):** Each question consist of two words which have a certain relationship to each other followed by four pairs of related words, Select the pair which has the same relationship.

**46. WAN:COLOUR**

- |                      |                      |
|----------------------|----------------------|
| (a) insipid:flavour  | (b) incipid:flavor   |
| (c) corpulent:weight | (d) corpulent:weight |

**47. PORK:PIG**

- |                 |                  |
|-----------------|------------------|
| (a) muton:sheep | (b) mutton:sheep |
| (c) steer:beef  | (d) steir:beef   |

**48. AFTER:BEFORE**

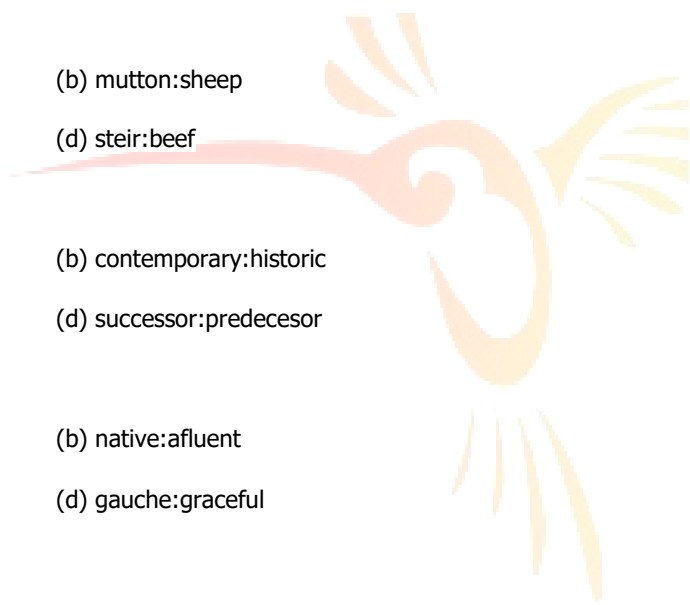
- |                           |                           |
|---------------------------|---------------------------|
| (a) contemporary:historic | (b) contemporary:historic |
| (c) successor:predecessor | (d) successor:predecesor  |

**49. INDIGENT:WEALTHY**

- |                     |                     |
|---------------------|---------------------|
| (a) native:affluent | (b) native:afluent  |
| (c) gauch:gracefull | (d) gauche:graceful |

**50. DISTANCE:MILE**

- |                  |                  |
|------------------|------------------|
| (a) liquid:liter | (b) liquid:litre |
| (c) weight:scale | (d) weigt:scale  |



ANSWERS									
1.	a	11.	b	21.	c	31.	a	41.	d
2.	a	12.	d	22.	d	32.	d	42.	d
3.	a	13.	c	23.	b	33.	b	43.	d
4.	c	14.	b	24.	a	34.	a	44.	c
5.	b	15.	a	25.	d	35.	C	45.	c
6.	d	16.	c	26.	b	36.	a	46.	a
7.	c	17.	c	27.	c	37.	b	47.	b
8.	c	18.	d	28.	d	38.	c	48.	c
9.	c	19.	c	29.	a	39.	d	49.	d
10.	b	20.	c	30.	c	40.	b	50.	b

PRACTICE PAPER – 5

Questions: 50

SPELL BEE

Time: 60 Minutes

1. Which suffix is used in the word "Comfortable"?

- (a) able (b) ible  
(c) table (d) None of these

2. Choose the correct verb in the given statement to fill in the blank:

Tacos\_\_\_\_ better with cheese on top.

- (a) tastes (b) tasted  
(c) taste (d) None of these

(Directions for Question 3 – 5): Fill in the blanks with correct form of Adjectives.

3. This is the \_\_\_\_\_ painting he ever made.

- (a) most beautifull (b) most beautiful  
(c) beautifier (d) beautifeir

4. David scored the \_\_\_\_\_ amount of points among us.

- (a) lessar (b) lessor  
(c) leest (d) least

5. My cold this morning is even \_\_\_\_\_ than yesterday.

- (a) worst (b) wors  
(c) worse (d) worste

(Directions for Question 6 – 10): Write the Antonym of the following words:

**6. Valiant**

- (a) Courageous (b) Couragous  
(c) Cowardly (d) Cawordly

**7. Destitute**

- (a) Wealthy (b) Walthy  
(c) Happy (d) Happi

**8. Increase**

- (a) Improve (b) Impruve  
(c) Dekline (d) Decline

**9. Completed**

- (a) Mastered (b) Began  
(c) Masterred (d) None of these

**10. Moisture**

- (a) Dryness (b) Dampness  
(c) Dampnes (d) Drynes

**11. Which one of the following is the homophone of "Bear"?**

- (a) Bare (b) Baer  
(c) Beare (d) None of these

**(Directions for Question 12 – 15): Fill in the blank with the most suitable word and correct spelling.**

**12. My grandmother has a good \_\_\_\_\_ in her hands because she can sew beautiful quilts.**

- (a) influential (b) influntial

- (c) dexterity (d) dextarity

**13. Some say teal is a nice shade of green but I prefer \_\_\_\_.**

- (a) aquamarine (b) aquatic  
(c) aquamarene (d) aquatec

**14. We needed to come up with an impressive \_\_\_\_ to win the game.**

- (a) Legendory (b) Legendary  
(c) Stratagy (d) Strategy

**15. Workers \_\_\_\_ the Erie Canal across New York State.**

- (a) wrecked (b) recked  
(c) dug (d) None of these

**(Directions for Question 16 – 20): Give the one word substitution of the following sentences.**

**16. Easily seen or obvious.**

- (a) Dusk (b) Duske  
(c) Evidant (d) Evident

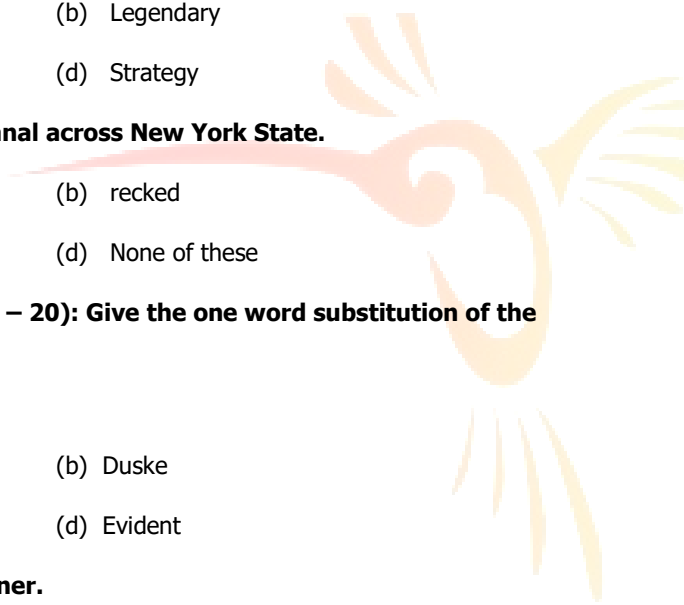
**17. Harsh or severe in manner.**

- (a) Stern (b) Sturn  
(c) Glimpse (d) Glemps

**18. To move quickly.**

- (a) Clamor (b) Clamar  
(c) Hasten (d) Hastan

**19. In a disapprove manner.**



- (a) Reapproachfully                      (b) Reproachfully  
(c) Mourning                                (d) Mournning

**20. To express one's thoughts or feelings.**

- (a) Vent                                        (b) Vant  
(c) Smirked                                 (d) Smurked

**(Directions for Question 21 – 23): Read the following passage and answer the following questions.**

**The mountain frames the sky**

**As a shadow of an eagle flies by.**

**With clouds hang at its edges**

**21. Correct the underlined word.**

- (a) Hangs                                      (b) Hanges  
(c) Hanging                                  (d) None of these

**22. Which one of the following is the plural of shadow?**

- (a) Shadoes                                  (b) Shadowes  
(c) Shadows                                 (d) None of these

**23. Complete the following analogy.**

**Cub: Bear :: Eagle: \_\_\_\_\_**

- (a) Predatar                                  (b) Predator  
(c) Fawn                                        (d) Faun

**24. Which Figure of Speech is used in the following sentence?**

**"As light as a feather."**

- (a) Simile (b) Smile  
(c) Metaphor (d) Metophor

**25. The CONDENSED story was unlike the long novel.**

**What is the meaning of the word in all caps?**

- (a) Lengthy (b) Lengthy  
(c) Short (d) None of these

**(Directions for Question 26 - 30): Select the correct Synonym of the given word**

**26. Silly**

- (a) Damp (b) Dampe  
(c) Ridiculous (d) Ridiculos

**27. Argue**

- (a) Disagree (b) Disagre  
(c) Disimmilar (d) Dissimilar

**28. Irritate**

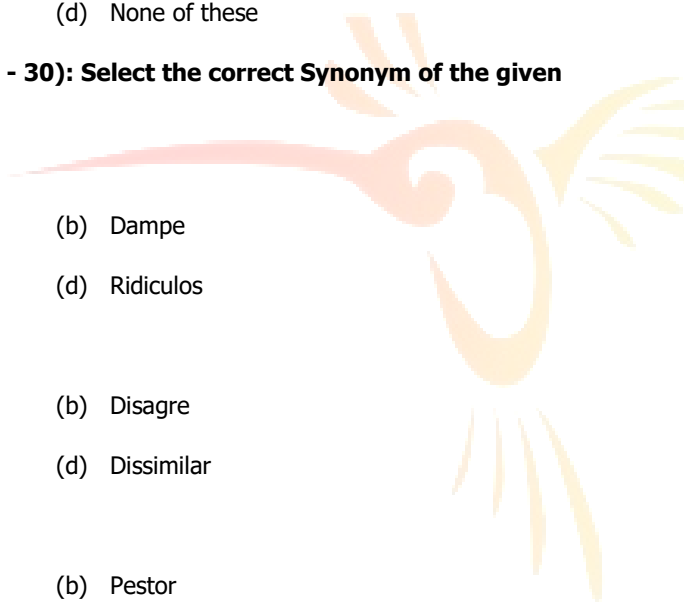
- (a) Enormos (b) Pestor  
(c) Enormous (d) Pester

**29. Typical**

- (a) Scattered (b) Standard  
(c) Standurd (d) Scatered

**30. Embarrassed**

- (a) Ashamed (b) Comforted





- (c) Ashemed (d) None of these

**(Directions for Question 31 – 35 : Choose the word that is spelled correctly.)**

**31.**

- (a) Changeable (b) Changeble  
(c) Changible (d) Changeable

**32.**

- (a) Accepted (b) Accepted  
(c) Acepted (d) Acceptedt

**33.**

- (a) Apran (b) Appran  
(c) Apron (d) Apran

**34.**

- (a) Hectec (b) Hectec  
(c) Hactic (d) Hectic

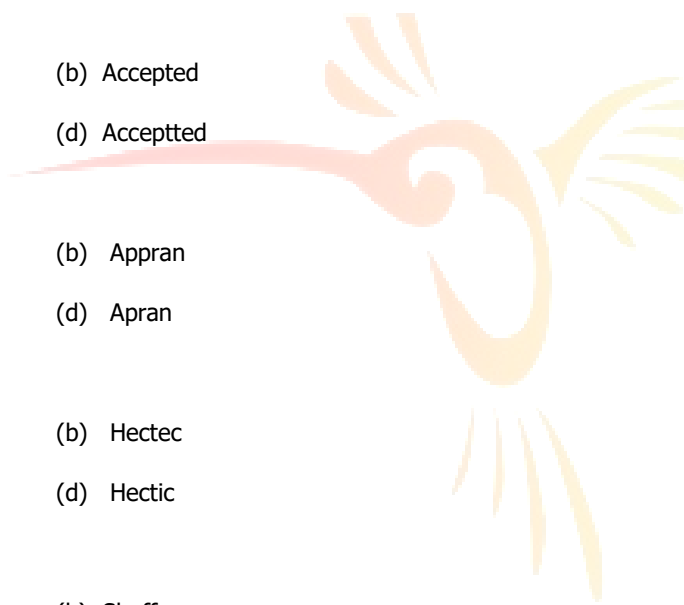
**35.**

- (a) Shef (b) Sheff  
(c) Cheff (d) Chef

**(Directions for Question 36 – 40) : Fill in the blank to complete the word with correct spelling.**

**36. Dent \_ \_ \_**

- (a) ist (b) est  
(c) ost (d) ust



**37. Her\_\_ \_ c**

- (a) io
- (b) oi
- (c) eo
- (d) oe

**38. Journ\_ \_ \_ \_ \_**

- (a) alism
- (b) elism
- (c) alesm
- (d) None of these

**39. Accus\_ \_ \_ \_ \_**

- (a) ution
- (b) ition
- (c) etion
- (d) ation

**40. Optim\_ \_ \_ \_**

- (a) usm
- (b) esm
- (c) ism
- (d) osm

**41. Find the comparative form of the adjective "Bad".**

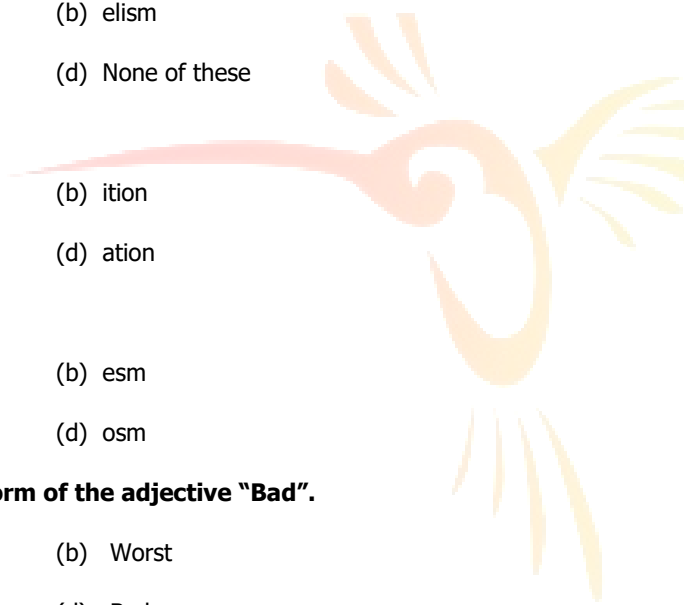
- (a) Worse
- (b) Worst
- (c) Badder
- (d) Bader

**42. Which one of the following is the homophone of the word "Bolder"?**

- (a) Boular
- (b) Boldar
- (c) Boulder
- (d) None of these

**(Directions for Question 43 – 46) : Choose the word which completes the following Analogies?**

**43. Wolf: Canine :: Tiger : \_\_\_\_**



- (a) Perch (b) Parch  
(c) Felene (d) Feline

**44. Quick: Brisk:: Timid : \_\_\_\_**

- (a) Shy (b) Chy  
(c) Ugly (d) Uggly

**45. Farmer: Farm :: Nun : \_\_\_\_**

- (a) Schul (b) School  
(c) Abey (d) Abbey

**46. Calculator: Abacus:: Notebook : \_\_\_\_**

- (a) Blackbord (b) Blackboard  
(c) Papyrus (d) Papyras

**47. Which of these has an irregular vowel sound?**

- (a) Pinge (b) Ping  
(c) Moist (d) Miost

**48. Which word has a shout 'u' sound?**

- (a) Trust (b) Truste  
(c) Cute (d) None of these

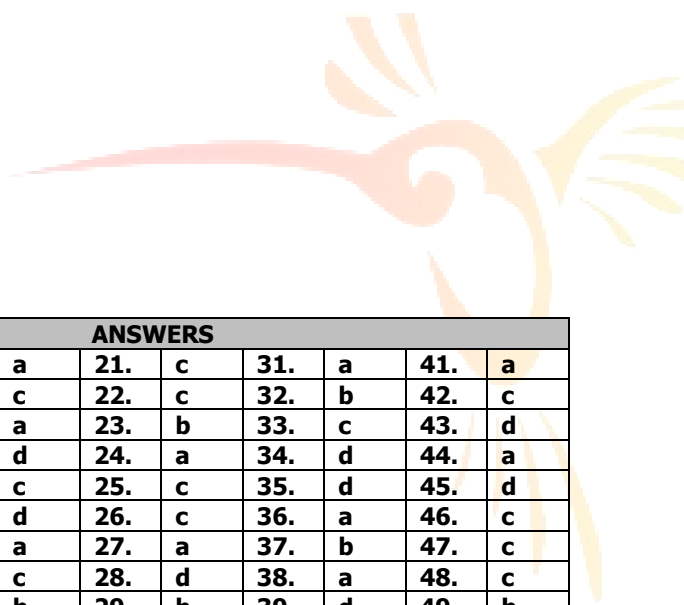
**49. Which words are homophones?**

- (a) Chill, Thrill  
(b) Colonel, Kernel  
(c) Colonal, Kernal  
(d) Chil, Thril

50. Choose the verb that best fits in the blank.

We have already\_\_\_\_\_ for our tickets to Disney.

- (a) paide
- (b) pay
- (c) pays
- (d) paid



ANSWERS									
1.	a	11.	a	21.	c	31.	a	41.	a
2.	c	12.	c	22.	c	32.	b	42.	c
3.	b	13.	a	23.	b	33.	c	43.	d
4.	d	14.	d	24.	a	34.	d	44.	a
5.	c	15.	c	25.	c	35.	d	45.	d
6.	c	16.	d	26.	c	36.	a	46.	c
7.	a	17.	a	27.	a	37.	b	47.	c
8.	d	18.	c	28.	d	38.	a	48.	c
9.	b	19.	b	29.	b	39.	d	49.	b
10.	a	20.	a	30.	a	40.	c	50.	d